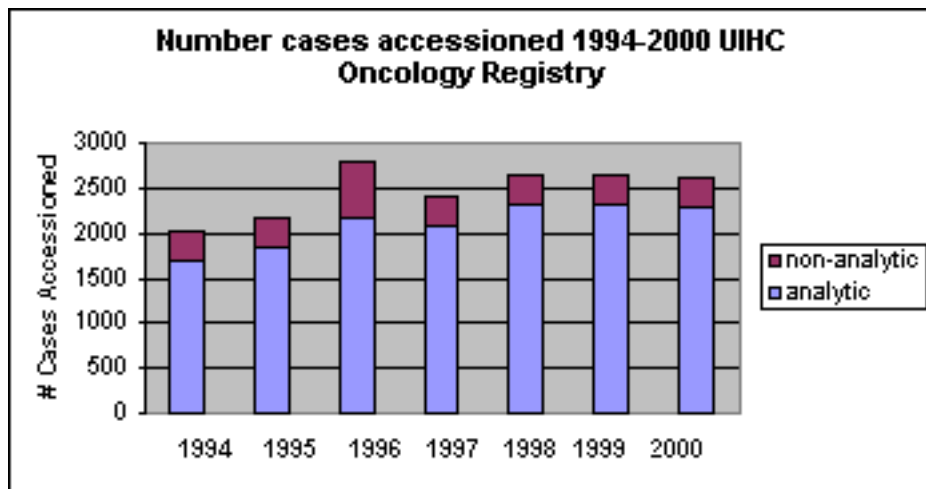


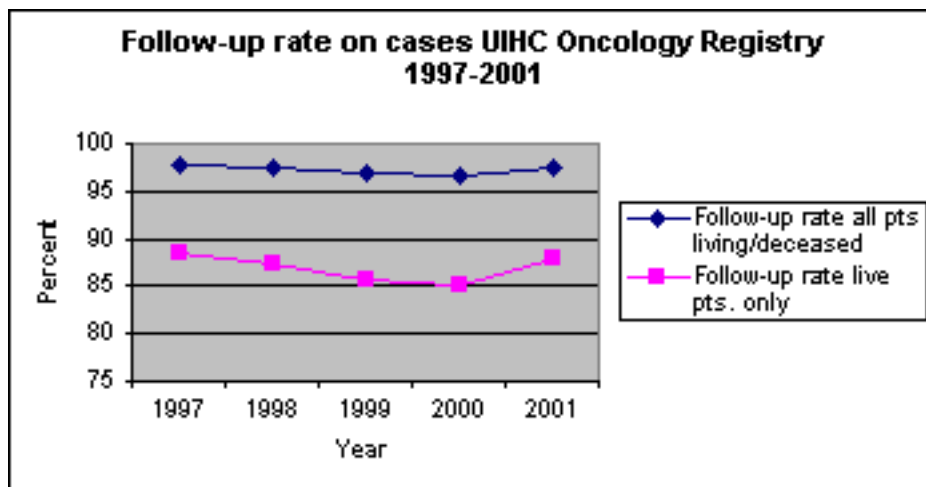
HOLDEN COMPREHENSIVE CANCER CENTER ONCOLOGY REGISTRY 2000 ACTIVITY SUMMARY

The Holden Comprehensive Cancer Center Oncology Registry is committed to collecting and providing information on all cancer patients diagnosed and/or treated at University of Iowa Health Care. This information includes life-long follow-up. Data is available from 1938 to present for medical staff to analyze and utilize to enhance and improve patient care.

There were 2615 cases* accessioned for the 2000 calendar year. The majority, 88%, were analytic** cases. There are over 119,000 cases on the registry database. The following figure shows the number of cases accessioned each year from 1994-2000.



Annual follow-up of patients is one of the important functions of the Oncology Registry. Most recent calculations reveal a 97.6% success rate on all cases living and deceased. The success rate on living patients is 87.9%. Follow-up provides valid measurement of outcomes. The following figure shows the percentages of follow-up rates for all patients and for living patients only from 1997-2001.



The Oncology Registry submits data to two national cancer data bases; ACOS Commission on Cancer's (CoC) National Cancer Data Base (NCDB) and National Cancer Institute's (NCI) Surveillance, Epidemiology and End Results data base. Data is submitted to NCI through the State Health Registry of Iowa (SHRI). Iowa State law requires reporting of cancer to the SHRI.

The Oncology Registry completed a hepatocellular patient care evaluation study sponsored by the ACOS Commission on Cancer. A second study involving intracranial and CNS neoplasms (malignant and non-malignant) diagnosed in the year 2000 was completed for the State Health Registry of Iowa. There were 128 benign/borderline cases identified.

The Oncology Registry is equipped with personal computers and Internet access for all staff. This facilitates follow-up procedures eliminating the need for newspapers and phone books. Access to the Internet provides current treatment information and standards information.

The Holden Comprehensive Cancer Center Oncology Registry hosted the Iowa Cancer Registrars Association Spring Workshop. Attendees were present from the four surrounding states as well as Iowa. Dr. Roger Gingrich, Associate Director of Clinical Affairs of the Holden Comprehensive Cancer Center welcomed the registrars and other participants. Dr. Richard Williams, Dr. Charles Platz, Dr. Timothy Ryken, Dr. Carol Scott-Conner and Dr. Henry Hoffman were the highlighted speakers of the workshop.

The three certified tumor registrars in the Oncology Registry attended the 27th annual educational conference sponsored by the National Cancer Registrars Association in May.

A newly designed brochure explaining the Oncology Registry and the follow-up procedure was completed this year. It is included with the letter sent to patients accessioned for the first time in the registry. The brochure highlights the patient's participation in the registry follow-up procedure.

The Registry began collecting data on all consults and second opinion cases January 1, 2001.

The registry's goal for 2001-2002 is to help create a new data collection system that will meet the special data needs of the Holden Comprehensive Cancer Center. The second goal is to focus on education for staff to learn the new 'Collaborative Staging' system and other revised data collection systems to be implemented in the near future.

**Excludes squamous and basal cell carcinoma of the skin, benign/borderline cases and consults.*

***Analytic cases are those cases diagnosed at UIHC and/or seen at UIHC for all or part of the first course treatment.*

Holden Comprehensive Cancer Center Oncology Registry Staff

Theola K. Rarick, CTR, Administrator

Julie A. Risinger, CTR, Office Coordinator

Deborah S. Schulte, CTR, RHIT, Data Technician

Beverly A. Black, Follow-up Specialist

Marla J. Graf, Clerk