

**Speech Conference Registration form
December 4-5, 2009**

REGISTRATION IS LIMITED TO 12 ATTENDEES

REGISTRATION DEADLINE: November 30, 2009

Name _____

Address _____

Address _____

City _____

State _____ Zip _____

Email Address _____

Phone _____

Fax _____

Cost: \$400. This includes course materials,
breakfast, lunch and snacks.

Please make checks payable to

“The University of Iowa”

mail to

**Karen Dondelinger
Course Coordinator
UIHC, Dept of Oto
21252 PFP
200 Hawkins Drive
Iowa City, IA 52242**

karen-dondelinger@uiowa.edu

michael-karnell@uiowa.edu

Phone: 319-356-3499 Fax: 319-356-4547

Please charge my _____ Visa / MasterCard

Card # _____

Exp. Date _____ / _____

Signature _____

**Michael Karnell,
PhD
UIHC, Dept of Oto
21252 PFP
200 Hawkins Drive**

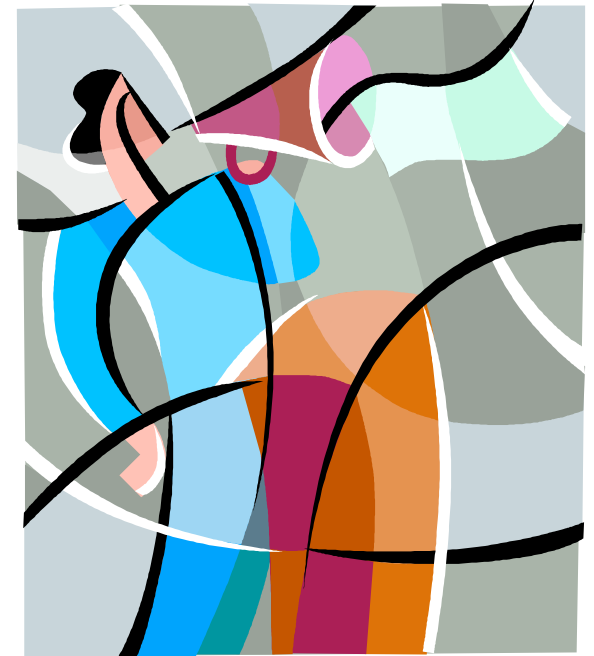
**Karen Dondelinger
Course Coordinator
UIHC, Dept of Oto
21252 PFP
200 Hawkins Drive
Iowa City, IA 52242**

University of Iowa
Department of Otolaryngology
Head and Neck Surgery
Iowa City, IA

**2nd Iowa Speech & Swallowing Flexible
Fiberoptic Endoscopy Course**

Applications for Speech Pathologists

December 4 - 5, 2009



Michael P. Karnell, PhD, CCC-SLP
Associate Professor

Director, University of Iowa Hospitals and Clinics
Consolidated Speech and Swallowing Service
Department of Speech-Language
Pathology and Audiology

LECTURERS

Scott Dailey, PhD, CCC-SLP
University of Iowa
Todd Coleman, MS, CCC-SLP
University of Iowa

**Postage
required**

2nd Iowa Speech & Swallowing Flexible Fiberoptic Endoscopy Course

Friday, December 4 and Saturday December 5, 2009
University of Iowa, Iowa City, IA

Goal: To provide orientation and hands-on instruction regarding the uses of flexible fiberoptic endoscopy for the purposes of swallowing and resonance assessment by speech-language pathologists in a medical setting.

Target participants: Speech-language pathologists and/or related medical professionals who are involved in making treatment recommendations for adults and children who have swallowing disorders or speech disorders related to velopharyngeal inadequacy.

Level: Introductory to Intermediate

Day #1

7:45

Check in & Obtain Course Packet

8:00-10:00

General Session 1

- Welcome & Course Overview
- Rationale for Endoscopic Swallowing Assessment
- Endoscopic Anatomy and Physiology
- Equipment

10:00-10:30

Break - Refreshments - Informal Discussion

10:30 – 12:00

General Session 2

- Assessment Observations and Protocols-FEES
- Case Studies
- Report Writing

12:00-1:00

Break - Lunch

1:00-2:30

General Session 3

- Technique – Instructor Demonstrations & Teaching

Break-out Session 1

Participant Hands-on training and practice

2:30-3:00

Break - Refreshments - Informal Discussion

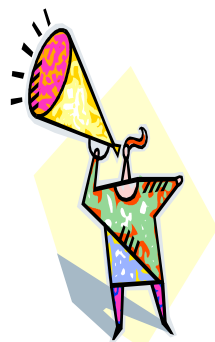
3:00-4:00

Break-out Session 2

Participant Hands-on demonstration and practice session 2

4:00 – 4:15

Closing Remarks for Day #1



Day #2

8:15

Check in

8:30 – 10:00

General Session 4

- Rationale for VPI Assessment
- Assessment Observations and Protocols-VPI
- Case Studies
- Report Writing

10:00 – 10:30

Break - Refreshments

10:30 – 12:00

General Session 5

Technique – Instructor Demonstrations & Teaching

Break-out Session 3

Participant Hands-on training and practice-VPI

12:00 – 1:00

Break

1:00 – 2:30

Break-out Session 4

Participant Hands on Demonstration & Practice-VPI & FEES

2:30 – 2:45

Break - Refreshments

2:45 – 3:45

Break-out session 5

Participant Hands on Demonstration & Practice-VPI & FEES

General Session 6

Discussion & Questions

3:45 – 4:00

Closing Remarks

Suggested Accommodations:

hotelVetro 201 S. Dubuque Street
Iowa City, IA 52240
Ph: 319-337-4058
Fx: 319-337-4961
www.hotelVetro.com

hotelVetro supplies a shuttle to and from the hotel

Registration is limited to the first 12 paid participants.

Registration deadline is 11/30/09

Content appropriate for ASHA CEU's

Closest Airports:

Eastern Iowa Airport, Cedar Rapids 20 minutes.

Airport Shuttle: 800-725-8460

Moline, IL 60 minute drive

Des Moines, IA 2 hr drive